

M-Head Spot 700W CMY
color mix+ zoom x 11



M-Head Wash 700W CMY
colormix+zoom x 8



Eightlight blinder x 4



Bar 6 PAR 64 x 2



PAR64 -1000W x 6
CP62



Teather Lights 1200w x 4
with blades



Fresnel with barn-doors x 6
(manfrotto tripod x 6)



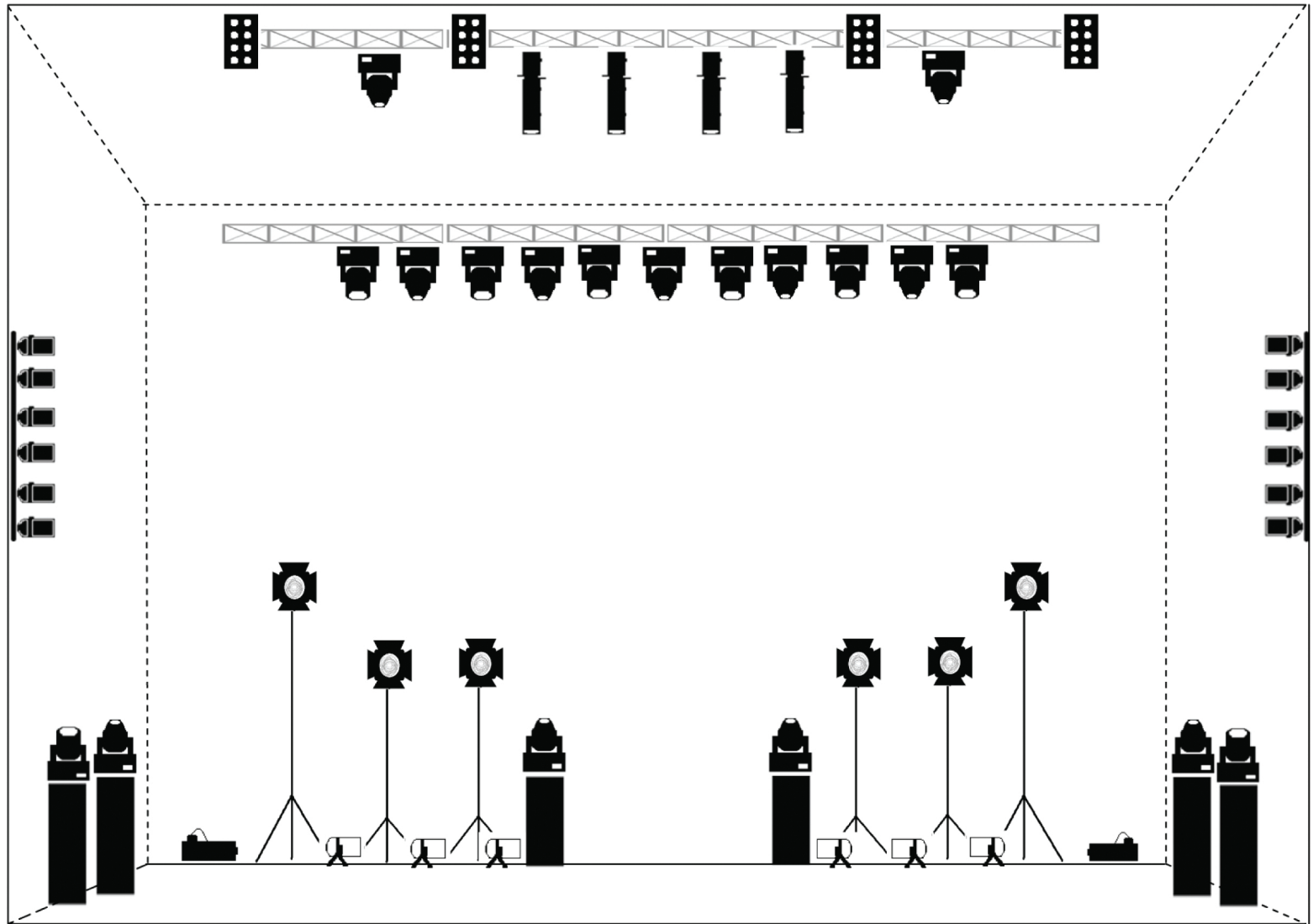
Hazer x 2



AVOLITES Tiger Touch or,
PEARL Expert Titan with
touch wing
(software V 4.2)



24 MTS TRUSS MODULES +
GENIES OR ENGINES AND
RACKS FOR MOVING-HEADS
PLACEMENT



Please Note:

- The equipment must be at perfect working conditions
- 2 DMX lines
- The person responsible for the local equipment must be available at all times

Artist: be-dom
 Lighting Technician: Pedro Alves
 Phone: +351 91 885 70 22
 E-mail: pedrotulipa@gmail.com



Whenever possible, use environmental friendly source of power and lights (such as led)
 Help us reduce the impact of our show on the planet